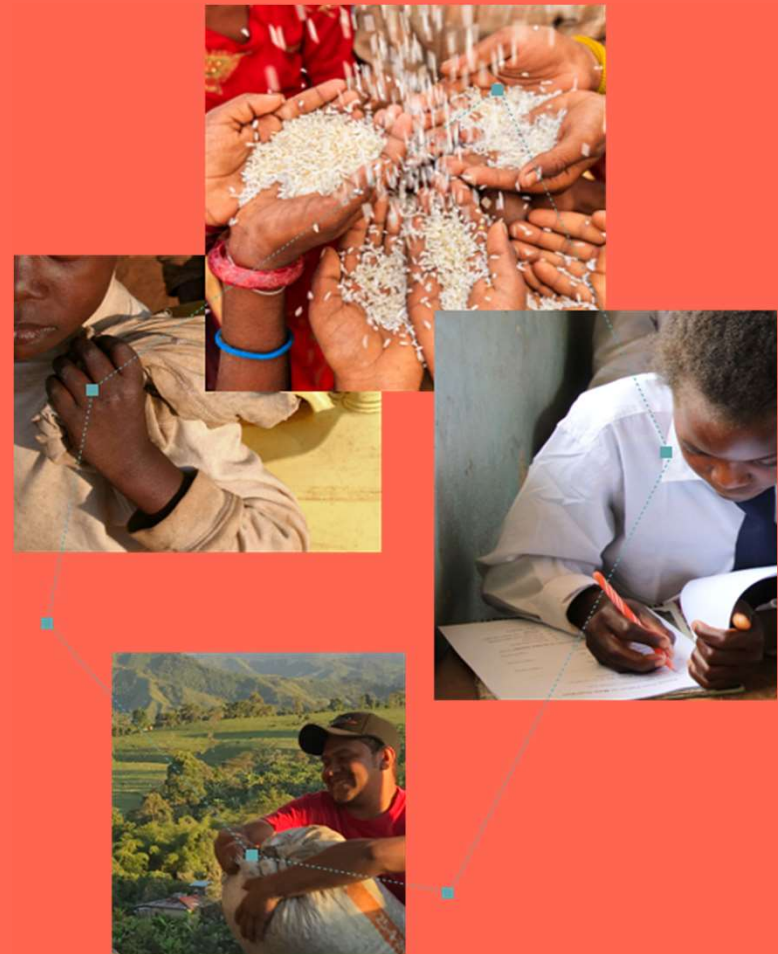


Hello. We're 60 Decibels.

Impact performance data for the
leaders of the next economy.

Data that drives impact performance.

Data that drives impact performance.



How We Work



Data Built by Listening

Who knows your impact best?
The people who experience it.
That's why we listen to them
directly to understand what they
say is happening in their lives.



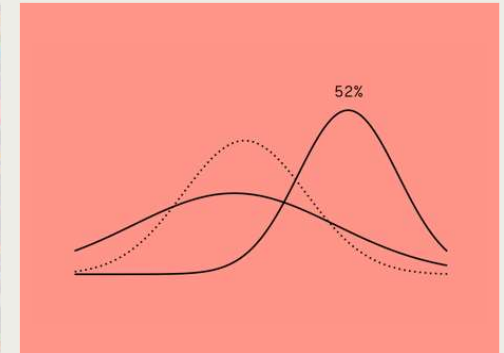
Speedy & Standardized

Most impact measurement is
either too complex to be scalable
or too simple to be useful.
Ours is a Goldilocks approach: 15-
minute, standardized surveys built
for replication and comparability.



By phone, by real people, anywhere

Nothing gets to the root of impact
better than a direct conversation.
Our Research Assistants speak,
by phone in local languages, to the
people you impact.



Benchmarked Impact Performance

Want to know how you stack up?
Our global impact database
enables you to benchmark and
improve your social performance.

Impact Metrics and Investment

Mitigation

Tons CO2

\$586B

Adaptation

Climate Resilient
Practices

\$49B

Two Solutions for Measuring Resilience

We aim to simplify and standardize—while providing the right insights for the right audience.



Objective Resilience

- Granular, practice-specific insights
- Agriculture sector
- Multi-year, captures medium term impacts

Best for funds for whom the *raison d'exister* is improving farmers' resilience.



Perceived Resilience

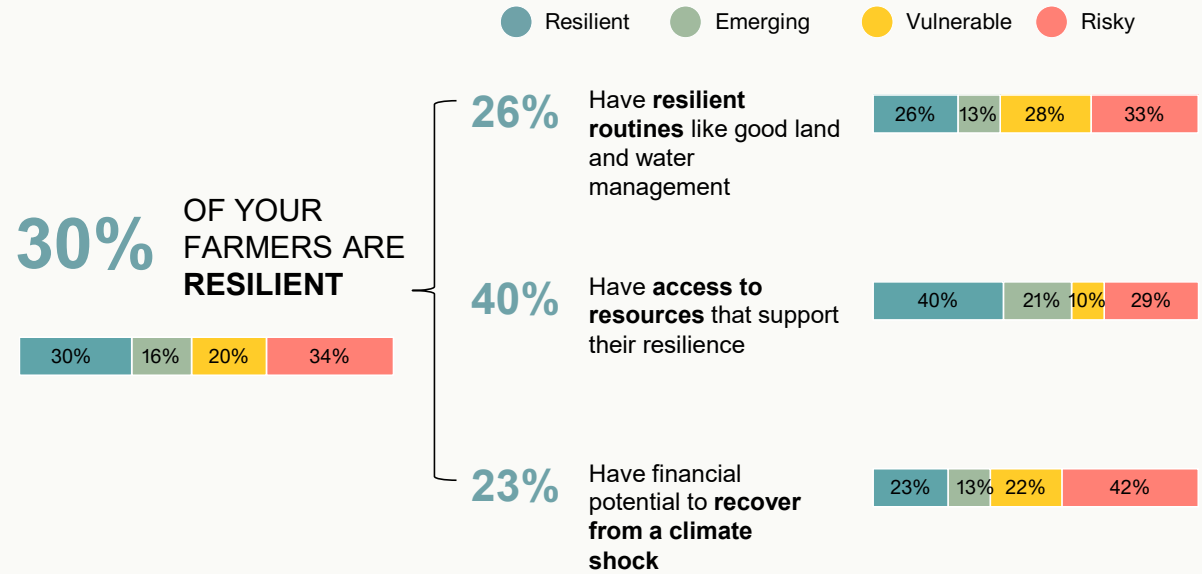
- Household's perception of impact
- Sector agnostic
- One-time survey

Best for funds or companies new to resilience measurement

ARAF (Objective) Resilience Measurement

Farmers are scored from risky to resilient on 22 indicators of resilience.

Resilience Snapshot

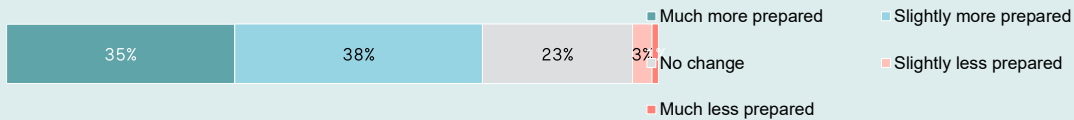


Perceived Resilience Impact

We ask households to reflect on how a company or product has changed their experience.

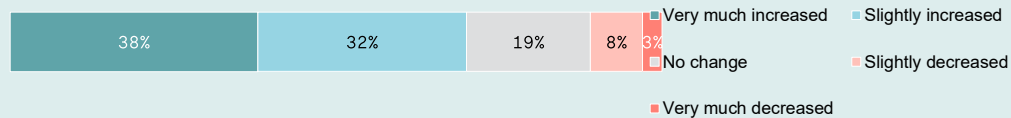
Perceived Preparedness

Q: Has [company] affected how prepared you feel for [an unexpected weather event, such as drought, lack of rain, or flooding, or a pest or disease outbreak]? (n= 275)



Financial Capacity

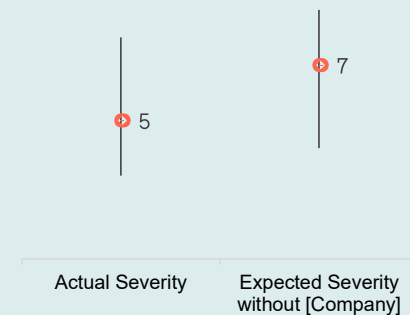
Q: Has [company] changed your ability to access [1/20 gross national income per capita in local currency] in the event of an emergency? (n= 275)



Severity of Impact

Q: How would you describe the negative effects of this [event from Q4] on your household where 0 is no negative effect and 10 is extremely negatively affected? (n = 200)

Imagine that you were not using [company/product.] How do you think the [event from Q4] would have impacted your household?





We must accelerate
the adoption of
standard impact
metrics for
climate
resilience.

I can now plant on time.
I used to delay getting seeds.
I was interested in the payment plan.

My family is
very

>healthy
>happy
>safe
>hopeful

now.

